



# INDOFINE Chemical Company, Inc.

121 Stryker Lane, Bldg. 30, Suite 1 • Hillsborough, NJ 08844 • U.S.A.

Phone: (908) 359-6778 • FAX: (908) 359-1179

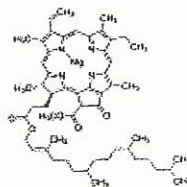
website: [www.indofinechemical.com](http://www.indofinechemical.com)

e-mail: [chemical@indofinechemical.com](mailto:chemical@indofinechemical.com)

## Certificate of Analysis

Product Name:  
Chlorophyll a – from spinach

Product Number: 026519  
Batch Number: 1609894  
CAS Number: 479-61-8  
MDL Number: MFCD00079050  
Formula: C<sub>55</sub>H<sub>72</sub>MgN<sub>4</sub>O<sub>5</sub>  
Formula Weight: 893.49 g/mol  
Storage Temperature: Store at -20 °C



Test	Specification	Result
Appearance (Color)	Blue to Very Dark Blue	Very Dark Blue
Appearance (Form)	Powder	Powder
Solubility (Color)	Blue, Green, or Blue-Green	Blue-Green
Solubility (Turbidity)	Clear	Clear
10 ug/mL, Ether		
EmM	82 - 91	89
(660-662 nm in Ether)		
EmM	106 - 118	115
(428-430 nm in Ether)		
Purity (HPLC)	≥ 85 %.	95 %
% Purity (HPLC)	≤ 0.4	0.4
Chlorophyll B		
Proton NMR Spectrum	Conforms to Structure	Conforms